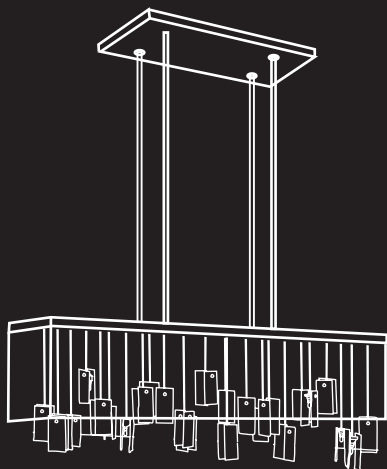


MAG Studio

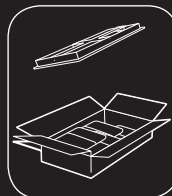


Assembly instructions

* Should be installed by a professional electrician



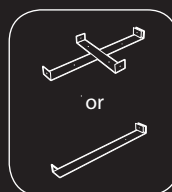
! **Turn off the correct electrical switch before you begin the installation.**



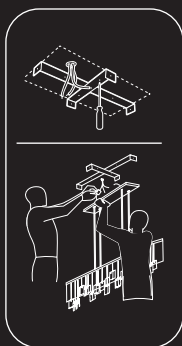
1. Open the "Upper canopy" box and remove the wrapping. Open the "Lower Canopy" box. Unwrap the canopy. Be careful not to brake the glass.



2. Prepare screws according to the type of ceiling: for wood ceilings please use screws for wood. For drywall ceilings, make sure you put screws where the ceiling joists are and use screws long enough to reach the hard layer on top of the drywall. For concrete use masonry and screws to hold the fixture.

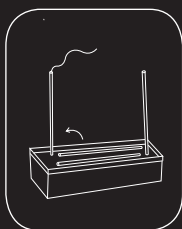


3. Remove the metal bracket from the back of the canopy.

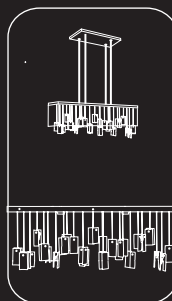


4. Attach the lower canopy to the rods using the 4 screws provided. Connect the 2 electrical wires coming out of one of the rods to the drivers – 1 wire per driver.

You will need a second person to help you hold the fixture up while you connect the electrical wire to the fixture. ~ We recommend using the gloves to hold the fixture to avoid fingerprints.



5. Screw the metal bracket to the ceiling with the flat side facing the ceiling. You must use the existing holes at the edge of the bracket for the screws. ~ Make sure that the electrical wires are exposed near the bracket.



6. Once the canopy is hung, carefully open the box with the glass pieces. Each piece has a number that corresponds with a number on the canopy. This will tell you where each piece goes. You can position the glass to be at the height that you want it, we recommend 1"-3" from the canopy. Insert the cables, attach to the glass, and into clips in the canopy. The distance from the canopy to the top of each piece of glass should be the same on all glass pieces.